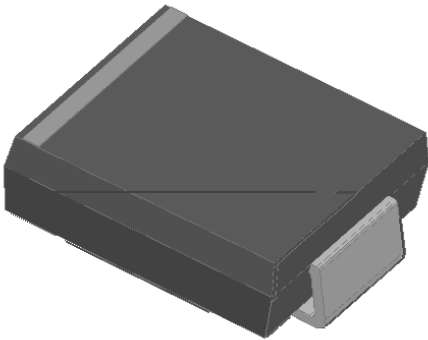




# Surface Mount Schottky Rectifier

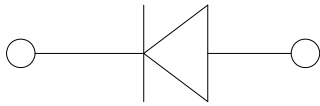


### Features

- " \*XDUGULQJ IRU RYHUYROWDJH SURWHFWLRO
- "/RZ IRUZDUG YROWDJH GURS /RZ SRZHU ORV
- " +LJK IRUZDUG VXUJH FDSDELQW\
- " +LJK IUHTXHQF\ RSHUDWLRQ
- "/RZ IRUZDUG YROWDJH GURS /RZ SRZHU ORV
- " 6ROGHU GLS f& SBU -(6' %

### Typical Applications

- )RU XVH LQ ORZ YROWDJH KLJK IUHTXHQF\ L
- IUHHZKHHOLQJ '&'&DQJ SROVHUW\ SURWHF
- DSSOLFDWLRQV



C

### Mechanical Data

- " Package '2 \$% 6A&
- 0ROGLQJ FRPSRQG PHHWDPPDELQW\
- UDWLQJ 5R+6 FRPSOLDQW
- " Terminals 7LQSODWHG OHDGV VROGHUDEOH S
- DQG -(6' %
- Polarity: &RORU EDQG GHQRWH\ WKH FDWKRGH

### Maximum Ratings

PARAMETER	SYMBOL	UNIT	SSL34	SSL36	SSL310
'HYLFH PDUNLQJ FRGH			SSL34	SSL36	SSL310
5HSHWLWLYH 3HDN 5HYHUVH 9ROVDJH		9		9y p y 0	
YHUDJH 5HFWLILHG 2XWSXW &XUUHQW	&XUUHQW	\$,*			
# +] VLQH ZDYH 5HVLVWDQFH ORDG 7D					
)RUZDUG 6XUJH &XUUHQW 1RQ UHSHWLWLYH		\$			
# +] +DOI VLQH ZDYH F\FOH 7D <sup>60</sup>					
6WRUDJH 7HPSHUDWXUH	7VWJ			a	
-XQFWLRQ 7HPSHUDWXUH	7				

7D

1RWH 3XOVH WHVW X6 SXOVH ZLGK GXW\ F\FOH

1RWH 3XOVH WHVW SXOVH ZLGK P6



# SSL34 THRU SSL310

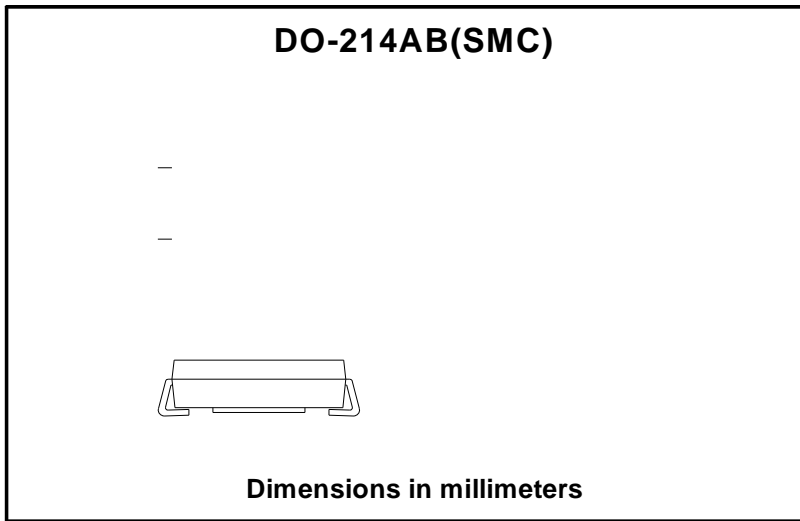
---

Thermal Characteristics A 7D



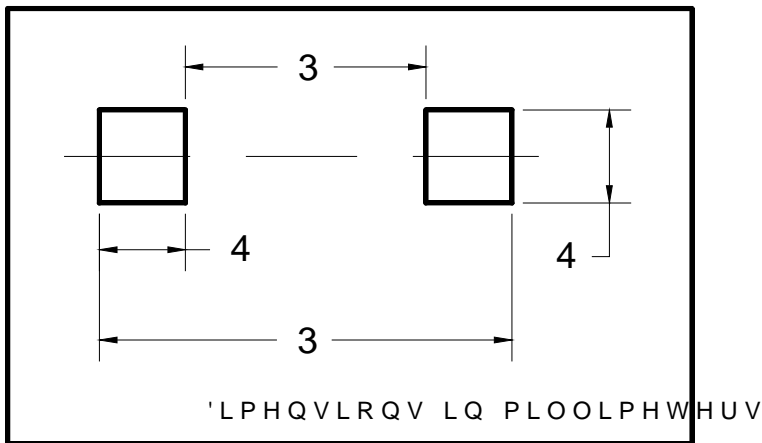
# SSL34 THRU SSL310

## vOutline Dimensions



'2	\$%	60&
'LP	0LQ	0D
\$		
%		
&		
'		
(		
)		
*		
+		

## Suggested pad layout



Dim	Typ
3	
3	
4	
4	

